

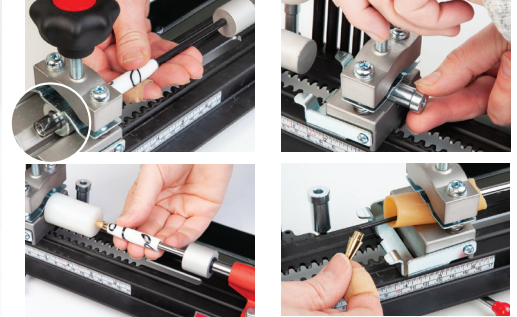
# Assembly/Disassembly

## Deluxe Pen Press Instructions

- Combined tool for assembly and disassembly of pens
- Offers reliability, accuracy and control
- Press pen parts together for perfect results
- Allows disassembly of virtually any pen
- Features a strong arm with ergonomic handle



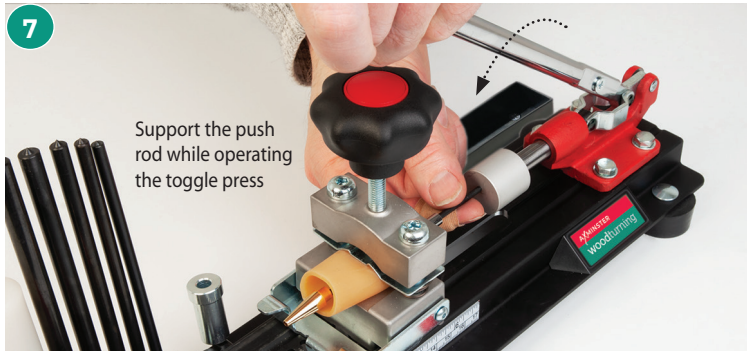
Date: 01.10.2021



Adjust the end support if needed to push or to support the pen



Lock nut

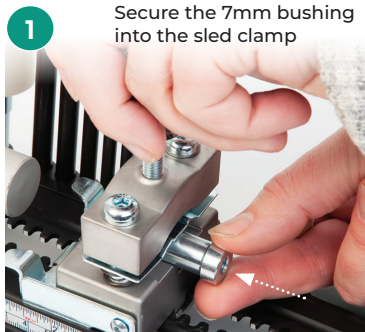


Support the push rod while operating the toggle press



Carefully push out the pen nib

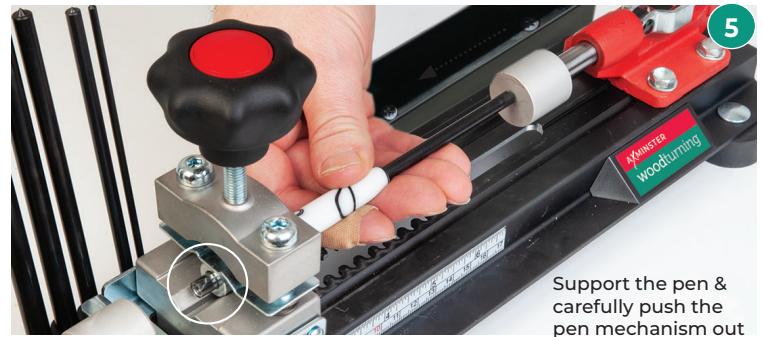
### 7mm Disassembly Bushing



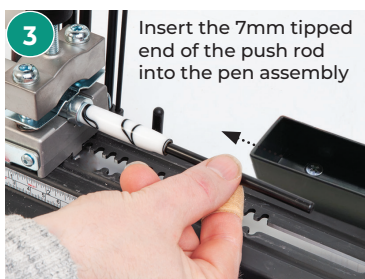
Secure the 7mm bushing into the sled clamp



Inset the pen mechanism into the 7mm bushing



Support the pen & carefully push the pen mechanism out



Insert the 7mm tipped end of the push rod into the pen assembly

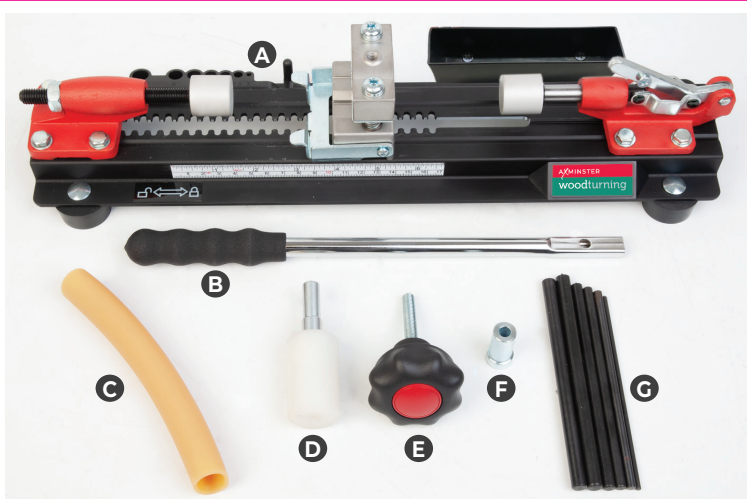


Move the sled close to the arm press and lock in place

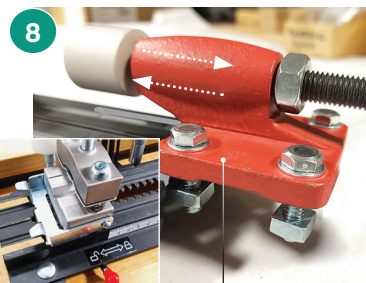
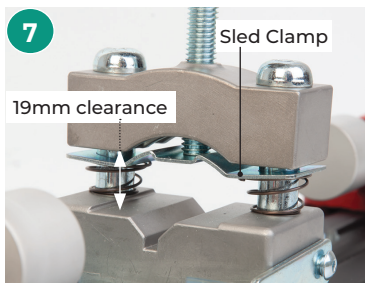
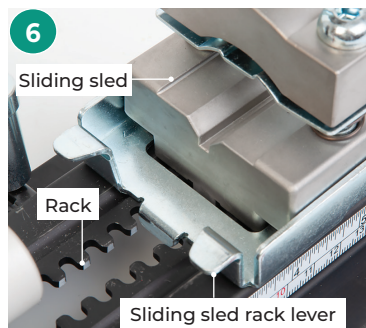
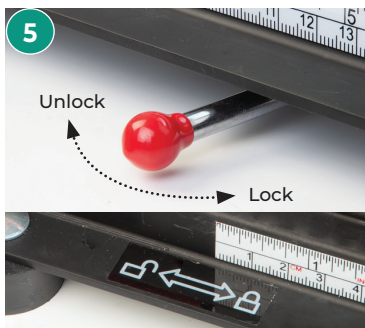
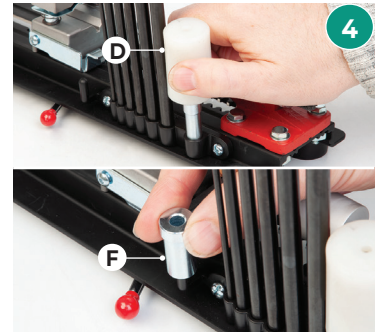
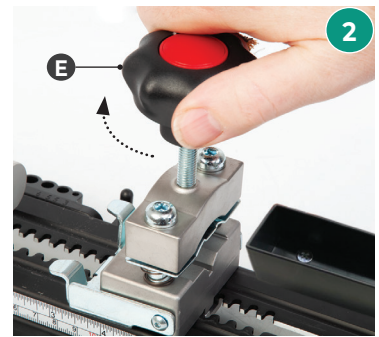


Remove the pen mechanism from the bushing



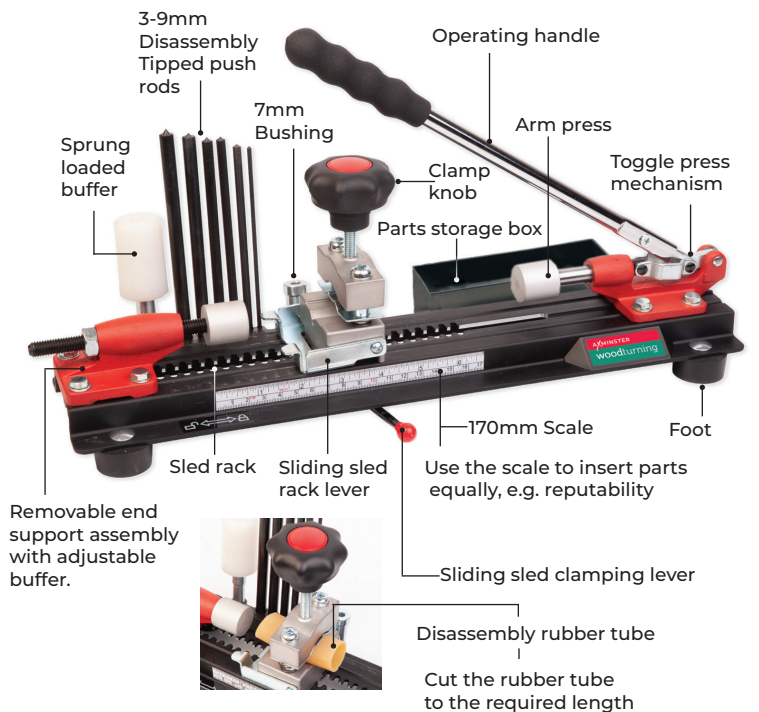


• Assembly/Disassembly Press	<b>A</b>	• 3.0mm Tipped Push Rod	<b>G</b>
• Operating Handle	<b>B</b>	• 5.5mm Tipped Push Rod	
• Disassembly Rubber Tube	<b>C</b>	• 6.0mm Tipped Push Rod	
• Sprung Loaded Buffer	<b>D</b>	• 7.0mm Tipped Push Rod	
• Clamping Knob	<b>E</b>	• 8.5mm Tipped Push Rod	
• 7mm Disassembly Bushing	<b>F</b>	• 9.0mm Tipped Push Rod	

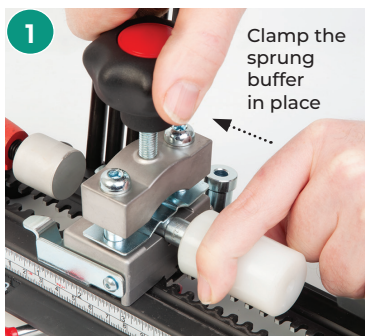


Clamp assembly with 19mm clearance for larger diameter pens

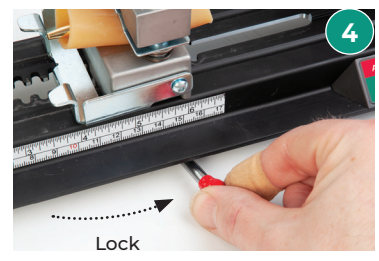
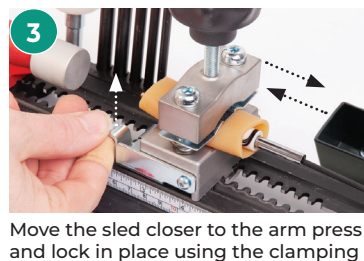
Removable end support assembly to utilise the full length of the sled rack



### Pen Assembly using Sprung loaded Buffer



### General Disassembly using Rubber Tube



Move the sled closer to the arm press and lock in place using the clamping lever

Continues Over...